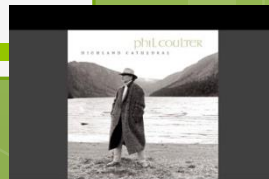


Y5 retreat to Holy Island

Wed 29th April – Fri 1st May

We stand on holy ground...



Lindisfarne



Safe Crossing Times

Date	Safe to cross	Unsafe to cross	Safe to cross	Unsafe to cross
------	---------------	-----------------	---------------	-----------------

Wed	29th	05:05 until 12:15	12:15 until 17:35	17:35 until 00:40 (Thu)	00:40 (Thu) until 05:50 (Thu)
-----	------	-------------------	-------------------	-------------------------	-------------------------------

Thu	30th	05:50 until 12:55	12:55 until 18:20	18:20 until 01:15 (Fri)	01:15 (Fri) until 06:35 (Fri)
-----	------	-------------------	-------------------	-------------------------	-------------------------------

Fri	1st	06:35 until 13:30	13:30 until 19:00	19:00 until 01:45 (Sat)	01:45 (Sat) until 07:10 (Sat)
-----	-----	-------------------	-------------------	-------------------------	-------------------------------

<https://holysislandcrossingtimes.northumberland.gov.uk/>





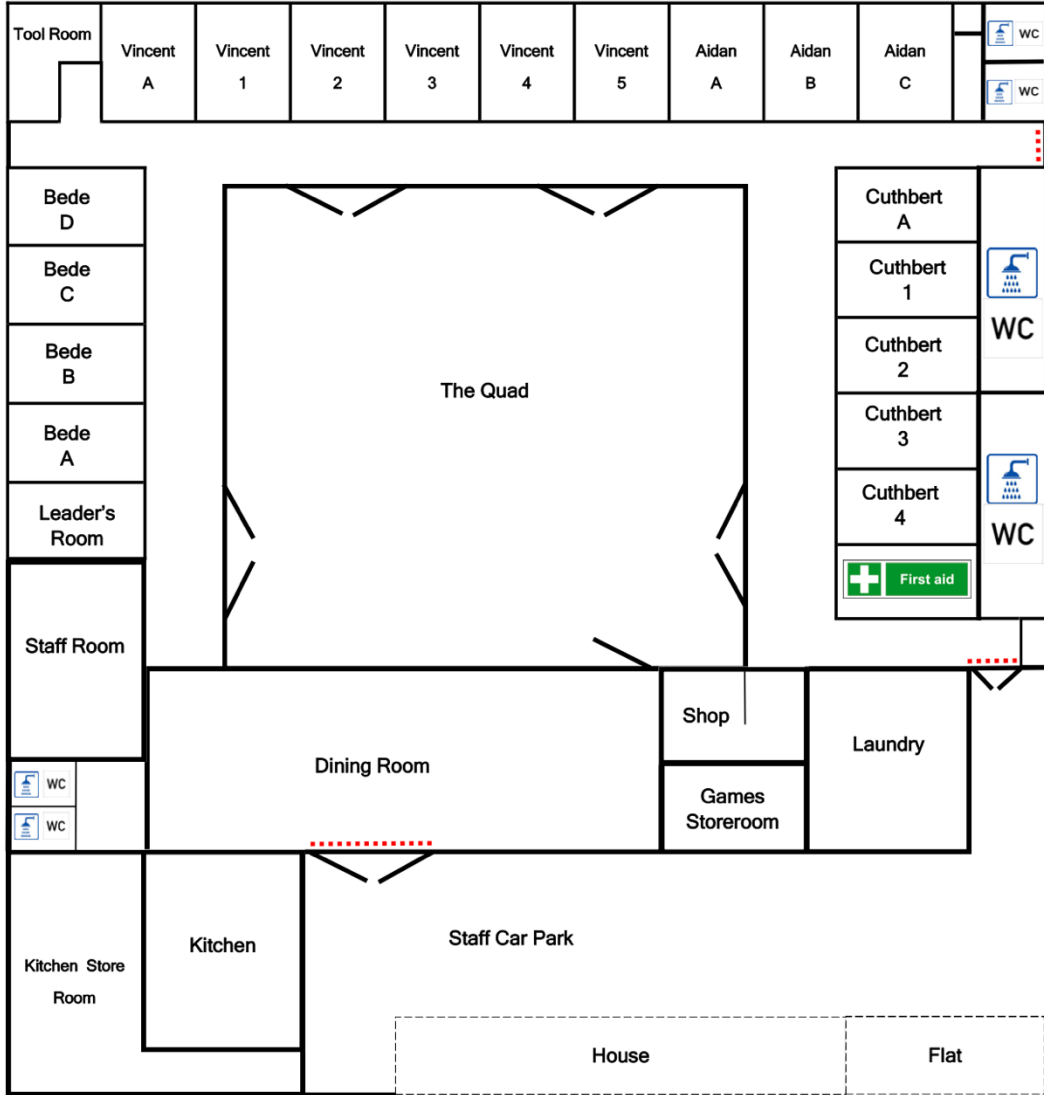
Boat Trip

Inner Farne Islands (Billy Shiel)



Causeway walk with Dave Harris Jones Wild Experiences Northumberland





**SVP
HOLY ISLAND CAMP**

KEY

- Showers
- WC Toilets
- Fire Exits



Entrance

Public Car Park

The Priory



The castle



Prayer Cairns



Making the most of our visit



We stand on holy ground...

Bamburgh Castle



Fish and Chips!





Staff...

Some practicalities...

- Paperwork
- Final payments by 29th March (installments)
- EV4 forms
- Personal information Forms – back asap
- Medication form – 1 week before
- Twitter/Arbor

EVERYTHING must be **named** and all items to be packed in a bag/case that you can carry from the bus.

Please make sure you know what is yours so that you can pack it for the journey home!

Suitcase: to go in boot of bus

Carry-on bag: to include packed lunch, snacks and drinks for the first day and the last

First day:

Bring a packed lunch and enough snacks and drinks for the first day (in a disposable bag – no needs)

Clothes

Tops (t-shirts, jumpers, sweat shirt, hoodie)

Bottoms (leggings, sweat pants, trousers)

Plimsolls/light trainers (to wear indoors – not slippers)

Trainers (for outdoors). *It is essential to have more than one pair of shoes in case of rain.*

Wellies: PLEASE LABEL WELLIES as children tend to have the same ones.

Socks and underwear

Night clothes

Outdoor coat and wet weather gear (waterproofs, wellies)

Other necessities

Towel(s)

Washbag including at least toothbrush and toothpaste, soap/shower gel, brush

Torch and batteries

Carrier bags for dirty clothes and wellies

Sun hat, sun cream? Hat and gloves?

Water bottle **with name on** to be used throughout trip

Optional extras

Reading book and favourite cuddly toy

Disposable/digital camera

Pocket money (maximum £15 in change **in a named purse/wallet**). May be collected and kept safe by staff if needed.

A small bag of sweets for sharing – none in dorms (staff to collect and share). *Nothing containing nuts, please.*

The following must NOT be brought on the residential:

Mobile phone or any electrical/electronic equipment

Jewellery or any valuables